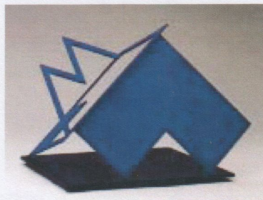


Folded Alphabets

Based on the sculpture of Fletcher Benton

Art 5 John Watrous



"I wanted to set forth a problem...Where I had to make something out of a given...All I could do was cut, fold out and redesignate the parts. In the final analysis they all had to fall back into a complete given square or circle."

Fletcher Benton

Concept

Fletcher Benton, like many creative people, imposes limits on himself. Why? Because limits focus energy and permit rapid results which can be seen and modified. Here we will start with a deceptively simple 11" square of paper, cut out shapes related to a single letterform and open it up into a 3D, planar form.

Limits

We will begin with 11 X 17" construction paper which we will fold and cut into 11" squares. Make several so that you can afford to make mistakes. Choose a simpler letterform to begin and try many ways to cut it out *remembering that no pieces can be removed and all cut outs must be able to fit back into the first square.*

Process

Make a series of 6 folded letterforms from different letters or numbers. Make them stand on their own for display and also fold back flat.

Real Materials

Choose your best folded letterform and make it out of the red, design Expanded PVC material. You may need to make separate parts because the material may not let you work as simply as paper.

Due: ---4 class meetings---

ser-if

Pronunciation: 'ser-*&*f

Function: noun

Etymology: probably from Dutch schreef stroke, line, from Middle Dutch, from schriiven to write, from Latin scribere -- more at SCRIBE

: any of the short lines stemming from and at an angle to the upper and lower ends of the strokes of a letter